

Shoes for 10-3/4" OD Sonic Casing



Part No.	Nominal O.D.	Nominal I.D.	Weight	Type Formation	TCI Type
10750.00	11 Inch	9.1 Inch	12.0 lbs.	Overburden	Ballistic & Domed
	279 mm	232 mm	5.4 kg.		

Shoes for 8-5/8" OD Sonic Casing [telescopes through 10-3/4 Casing]

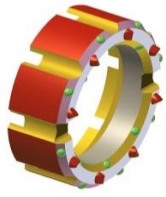


Part No.	Nominal O.D.	Nominal I.D.	Weight	Type Formation	TCI Type
10040.10	9 Inch	7.1 Inch	12.0 lbs.	Overburden	Chisel & Domed
	229 mm	181 mm	5.4 kg.		



Part No.	Nominal O.D.	Nominal I.D.	Weight	Type Formation	TCI Type
10040.20	9 Inch	7.1 Inch	13.0 lbs.	Drill Dry [No water injection]	All Ballistic
	229 mm	181 mm	5.9 kg.		

7 x 5 Casing Bits [on 6-5/8" OD pipe] telescope through 8-5/8" Sonic Casing

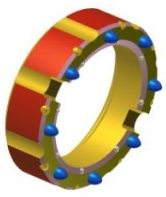


7 x 5 nominal Shoes on 6-5/8" OD Sonic Casing

Part No.	Nominal O.D.	Nominal I.D.	Weight	Type Formation	TCI Type
10005.10	7 Inch	5 Inch	9.5 lbs.	Overburden	Chisel & Domed
	178 mm	127 mm	4.3 kg.		



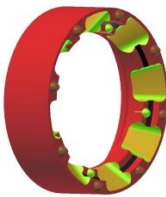
Part No.	Nominal O.D.	Nominal I.D.	Weight	Type Formation	TCI Type
10005.25	7 Inch	5 Inch	10.0 lbs.	Overburden	All Chisel
	178 mm	127 mm	4.5 kg.		



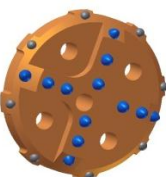
Part No.	Nominal O.D.	Nominal I.D.	Weight	Type Formation	TCI Type
10005.50	7 Inch	5.1 Inch	9.5 lbs.	Overburden	Ballistic & Domed
	178 mm	130 mm	4.3 kg.		



Part No.	Nominal O.D.	Nominal I.D.	Weight	Type Formation	TCI Type
10005.60	7 Inch	5.1 Inch	9.5 lbs.	Overburden	All Ballistic
	178 mm	130 mm	4.3 kg.		

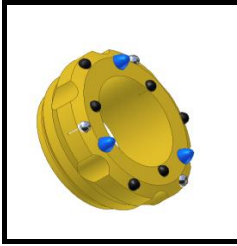


Part No.	Nominal O.D.	Nominal I.D.	Weight	Type Formation	TCI Type
10005.65	7 Inch	5.1 Inch	10.0 lbs.	Drill Dry [No water injection]	All Ballistic
	178 mm	130 mm	4.5 kg.		

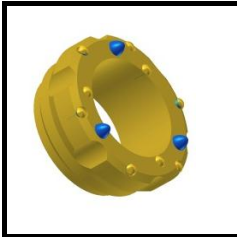


Part No.	Nominal O.D.	Nominal I.D.	Weight	Type Bit	TCI Type
10010.30 Raised Face	7 Inch	Solid	15.0 lbs.	Displacement or Knockoff	Ballistic & Domed
	178 mm	Solid	6.8 kg.		

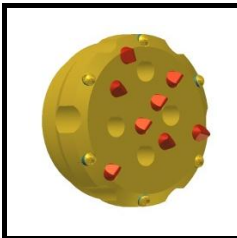
5" Bits on 4-1/2" OD Drill pipe telescope through 7 x 5 Casing Shoes



Part No.	Nominal O.D.	Nominal I.D.		Weight		Type Bit	TCI Type
10170.30	5 Inch	3	Inch	7.0	lbs.	Hollow Displacement	Chisel & Domed
	127 mm	76	mm	3.2	kg.		



Part No.	Nominal O.D.	Nominal I.D.		Weight		Type Bit	TCI Type
10170.40	5 Inch	3	Inch	7.0	lbs.	Hollow Displacement	Chisel & Domed
	127 mm	83	mm	3.2	kg.		



Part No.	Nominal O.D.	Nominal I.D.		Weight		Type Bit	TCI Type
10190.30B	5 Inch	Solid	Inch	7.0	lbs.	Solid Displacement	Chisel & Domed
	127 mm	Solid	mm	3.2	kg.		

Shoes for 5.50" OD Sonic Casing



Part No.	Nominal O.D.	Nominal I.D.	Weight	Type Bit	TCI Type
10411.00	6 Inch	4.1 Inch	7.0 lbs.	Hollow Displacement	Chisel & Domed
	152 mm	104 mm	3.2 kg.		

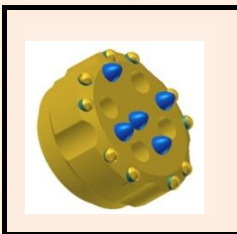


Part No.	Nominal O.D.	Nominal I.D.	Weight	Type Bit	TCI Type
10450.00	5.9 Inch	4.2 Inch	7.0 lbs.	Hollow Displacement	Chisel & Domed
	149 mm	mm	3.2 kg.		



Part No.	Nominal O.D.	Nominal I.D.	Weight	Formation	TCI Type
10455.00	5.9 Inch	4.2 Inch	7.0 lbs.	Drill Dry [No water injection]	Ballistic & Domed
	149 mm	106 mm	3.2 kg.		

Bits for 3-1/2" OD Sonic Drill Pipe that telescope through 6 x 4 Casing Bits



Part No.	Nominal O.D.	Nominal I.D.	Weight	Bit Type	TCI Type
14300.00	3.9 Inch	Solid Inch	8.0 lbs.	Displacement or Knockoff	Ballistic & Domed
	99 mm	Solid mm	3.6 kg.		



Part No.	Nominal O.D.	Nominal I.D.	Weight	Bit Type	TCI Type
10500.20	3.9 Inch	2 Inch	6.0 lbs.	Hollow Displacement	Chisel & Domed
	100 mm	51 mm	2.7 kg.		